

IMESA

Mission statement

To promote excellence in municipal engineering amongst its members for the benefit of the community.

Overview

The Institute of Municipal Engineering of Southern Africa (IMESA) promotes the interests of municipal engineers and their profession, and creates a platform for the exchange of ideas and viewpoints on all aspects of municipal engineering with the aim of expanding the knowledge and best practices in all Local Government municipalities.

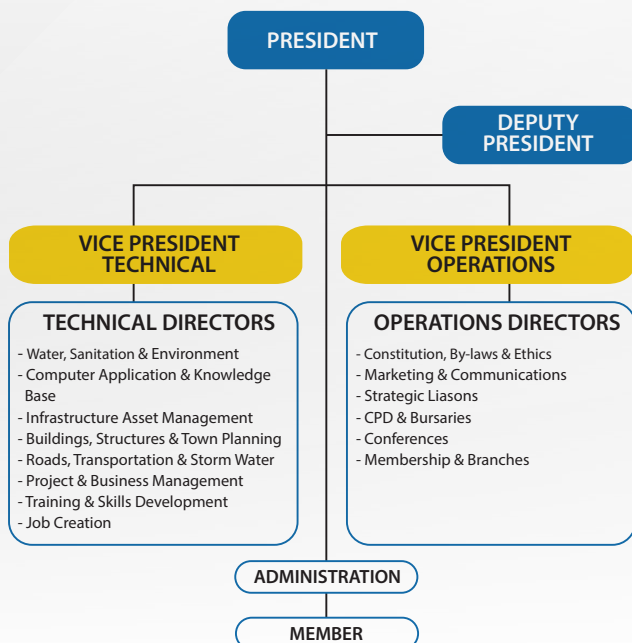
Since 1961, IMESA has played a significant role in municipal engineering, sharing knowledge and acting as a catalyst in developing new initiatives. Municipalities are key role-players in identifying needs, prioritising funding and implementing integrated development planning for community-based programmes. The Institute also advises Councils on municipal engineering matters and serves the broader community through representation on a number of national bodies, where it provides input from the municipal engineer's perspective.

Benefits and services to members

IMIESA Journal

Members of IMESA are granted free subscription to the IMIESA journal, a highly informative monthly publication that serves as a mouthpiece for the engineering fraternity by disseminating cutting-edge technical news and developments. The journal has received the prestigious PICA Award for the best publication of its kind in the Urban Management, Civil Construction and Infrastructural Development categories.

IMESA STRUCTURE



IMESA website

The IMESA website offers members and potential members a forum for opinion, news and support relating to the municipal engineering industry.

Seminars

Branches organise regular full- and half-day seminars, which feature speakers from both the technical and contemporary arenas. These seminars also provide opportunities to introduce new products in the technical field and to brief members and politicians.

Annual conferences

IMESA hosts an annual conference. Opportunities for members to gain valuable information and insight into issues facing the municipal engineering fraternity include the presentation of topical papers, product exhibitions and an opportunity to share and discuss ideas with like-minded engineers, municipal representatives and non-technical associates.

Bursary scheme

In 2000, IMESA established a bursary scheme for full-time studies in the field of civil engineering. Bursaries are awarded each year, as per our bursary policy.

The aims of the scheme are:

- To provide financial assistance to students who can't afford to study.
- To recognise achievements of students and prospective students who are dependants of IMESA members.

IMESA training

IMESA offers a range of training courses covering all aspects of Infrastructure Asset Management and other priorities relevant to engineering and municipal environments.

IMESA membership categories/grades

Corporate members

Professional members

They shall be persons who:

- Are registered by ECSA or an equivalent engineering council recognised by ECSA as full professionals in at least on one of the following categories:
 - professional engineer
 - professional engineering technologist
 - professional engineering technician
 - professional certified engineer
 - registered engineering technician
- Had at least three years infrastructure engineering experience after achieving a qualification recognised by ECSA or an equivalent engineering council recognised by ECSA for registration
- Have been admitted as such by the Executive Committee
- Having failed to comply with the requirements of the clauses above, have been admitted by Council, on the unanimous recommendation of the Executive Committee based on their opinion that such persons have the experience, employment responsibility or involvement in infrastructure engineering or made such a contribution to infrastructure engineering which in the interests of the Institute justifies such admission.

Non-corporate members

Graduate members

They shall be persons who:

- Are registered/eligible for registration by ECSA or an equivalent engineering council recognised by ECSA in at least one of the following categories:

Subscription fees: July 2016 – June 2017

ENTRANCE FEE

Member (all categories)	R240
-------------------------	------

ANNUAL CORPORATE MEMBER FEES

Fellow	R960
Professional	R960
Retired Fellow	R280
Retired Professional	R280

ANNUAL NON-CORPORATE MEMBER FEES

Graduate	R460
Student	R250
Associate	R580
Retired Non-corporate	R250

- candidate engineer
- candidate engineering technologist
- candidate engineering technician
- candidate certified engineer
- Are admitted as such by the Executive Committee
- Have been admitted by Council on the unanimous recommendation of the Executive Committee based on their opinion that such persons have the experience, employment responsibility or involvement in infrastructure engineering or have made a contribution to public sector engineering which in the interests of the Institute justifies such admission.

Student members

They shall be persons who are:

- Enrolled students at a local or international university/technical

university recognised by ECSA

- Studying towards a degree/diploma in engineering
- Admitted as such by the Executive Committee.

Associate members

They shall be persons who:

- Have satisfied the Executive Committee that they are involved in an aspect of infrastructure engineering
- Are admitted as such by the Executive Committee.

Affiliate members

They shall be those academic, research, consulting, commercial, industrial or others undertakings who:

- Are in the opinion of the Executive Committee, involved in business related to infrastructure engineering
- Are admitted as such by the Executive Committee.

CONTACT DETAILS

The head office of IMESA is situated in Durban (in KwaZulu-Natal, South Africa) and the address is as follows:

Street address:

IMESA House, 2 Derby Place, Derby Downs Office Complex, Westville, 3629, KwaZulu-Natal, South Africa

Postal address:

PO Box 2190, Westville, 3630, KwaZulu-Natal, South Africa

Contact numbers:

t +27 (0)31 266 3263 • f +27 (0)31 266 5094 • c +27 (0)71 608 1480

East London
Convention Centre



SAVE THE DATE

25th-27th
OCTOBER
2017



SUSTAINABLE ENGINEERING: back to basics for the future
Has technology in design made us forget the basic principals of engineering design?



CONFERENCE
VENUE

EMPERORS PALACE
KEMPTON PARK – JOHANNESBURG

**SUSTAINABLE
ENGINEERING:
BACK TO BASICS FOR
THE FUTURE**

Has technology in design made
us forget the basic principals of
engineering design?



ORGANISER

THE INSTITUTE OF MUNICIPAL ENGINEERING OF
SOUTHERN AFRICA (IMESA)
TEL: 031 266 3263 DEBBIE OR MELANIE



**EARN
2 CPD POINTS**

Background information for Affiliate membership

A. Definition of Affiliate Membership

IMESA'S Constitution

Affiliates shall be those consulting, commercial or industrial undertakings, which have been admitted as such by the Executive Committee, so long as their names are on the Roll as such.

Any consulting, commercial or industrial undertaking may be admitted as an Affiliate provided, in the opinion of the Executive Committee, it is involved in business related to municipal engineering.

B. Membership Categories

This type of membership offers **4 categories**:

- **Platinum:** Recommended for larger corporates operating countrywide with perhaps ties abroad (20+ offices or outlet points).
- **Gold:** Recommended for medium-sized corporates operating in the major regional centres (10-20 offices or outlet points).
- **Silver:** Recommended for smaller corporates operating locally (<10 offices or outlet points).
- **Professional:** Reciprocal complimentary membership for synergy between associated organisations.

An Affiliate member may request a change to its membership category once a year, when the renewal of its annual subscriptions becomes payable.

ENTRANCE / JOINING FEES	R
Affiliate Member – Platinum	3 630
Affiliate Member – Gold	2 810
Affiliate Member – Silver	1 900
ANNUAL NON-CORPORATE MEMBER FEES	R
Affiliate Member – Platinum	11 650
Affiliate Member – Gold	7 700
Affiliate Member – Silver	5 150

N.B: Membership fees do not apply for Professional Affiliate Members.

C. Benefits of Affiliate Membership

• IMESA magazine

Official journal published monthly by 3S Media. This prestigious technical journal has a circulation of over 9000 and has won a number of awards, including SAPPI-PICA and other Mondi awards. The journal is also now available electronically.

• Citings and editorial

A citing is editorial compiled by IMESA's editorial staff, and is valued at least twice that of paid advertorial of the same size. The following are offered to Affiliates:

MEMBER CATEGORY	EXPOSURE
Platinum	3 Citings per annum
Gold	2 Citings per annum
Silver	1 Citing per annum
Professional	1 Citing per annum

Note: Company logos are omitted in editorials and citings as it will lead to losing its value as an editorial/citing. In order to retain editorial integrity, Affiliates will be entitled to expect exposure on this basis, which provides "clean exposure" in that it is not paid for. New appointments, contracts or important projects will receive attention.

• Discount on advertising

All affiliate members will automatically receive Most Valued Client status with 3S Media, meaning that advertisement positions are prioritised.

In addition to this, **3S Media** offers a 10% discount on all advertisements on submission of publishable technical material by Affiliate members. The 10%

discount is also applicable to other advertorial products such as inserts and inside cover positions of the journal.

• Free copies

Affiliate members will receive free copies of the IMESA journal as follows:

Platinum	1 copy per office / outlet point, Max 15
Gold	1 copy per office / outlet point, Max 10
Silver	1 copy per office / outlet point, Max 5
Professional	1 copy per office / outlet point, Max 5

• Affiliate showcase

This is a dedicated full page in each issue of IMESA journal identifying Affiliate members. Their logo's are presented in colour and they are listed as well.

D. Annual Conferences

• Sponsorship at conference

"First refusal right" towards sponsorship at the annual IMESA conference. The conference organising committee/professional organisers will contact all Affiliates in advance, prior to seeking sponsorships from the rest of the industry.

• Exhibition stand cost at the annual IMESA Conference

The following discounts are afforded on cost of exhibition stands at the conference:

• Conference registration fees

Affiliates will enjoy special membership registration fees for the annual IMESA Conference for each delegate, with further discount for 3 and more delegates. Delegates representing Affiliate members will enjoy the same discount as ordinary IMESA members. This is currently in the order of 25% off the normal non-member delegate registration fees.

Platinum	10%
Gold	7.5%
Silver	5%
Professional	5%

E. IMESA Website

The dynamic IMESA website is the main communication medium used by IMESA.

• Advertising on IMESA website

Advertising benefits on IMESA's web page will depend on the form the advertisement takes and exposure value obtained.

• Website exposure

IMESA Affiliates also receive exposure on the web, as their logos are presented in the Affiliate Membership sub-site.

F. Certificate

Affiliate members will be supplied with a framed certificate from IMESA for their head office, reflecting their Affiliate membership status of IMESA. Additional free certificates will be supplied (one for each office of the Affiliate member).

G. Stationery

Affiliates will have permission to use the IMESA logo, with subscript "Affiliate Member", on their letterheads and other corporate ware.

H. Attendance at IMESA

Branch Proceedings

An IMESA Affiliate may send an unlimited number of attendees to branch meetings and similar proceedings. Affiliates will be included on the contact lists of all IMESA branches countrywide.

Background information on Individual membership

A. Vision/mission

To promote excellence in the engineering profession for the benefit of municipalities and their communities.

B. Overview

The Institute of Municipal Engineering of Southern Africa (IMESA) promotes the interests of municipal engineers and their profession, and creates a platform for the exchange of ideas and viewpoints on all aspects of municipal engineering. The aim is to expand the knowledge and best practices in all local government municipalities.

Since 1961, IMESA has played a significant role in municipal engineering, sharing knowledge and acting as a catalyst in developing new initiatives. Municipalities are key role-players in identifying needs, prioritising funding and implementing integrated development planning for community-based programmes.

The Institute also advises councils on municipal engineering matters and serves the broader community through representation on a number of national bodies, where it provides input from the municipal engineer's perspective.

C. IMESA heraldry and motto

The IMESA coat of arms was designed by Alan Woodrow and was registered with the South African Bureau of Heraldry in 1972.

D. Benefits and services

to members

1. IMESA JOURNAL

Members of IMESA are granted free subscription to the IMESA journal, a highly informative monthly publication that serves as a mouthpiece for the entire engineering fraternity by disseminating cutting-edge technical news and developments. The journal has received the prestigious PICA award for the best publication of its kind in the Urban Management, Civil Construction and Infra-structural Development Categories.

2. IMESA WEBSITE

The IMESA website offers members and potential members a forum for opinion, news, and support relating to the municipal engineering industry.

3. SEMINARS

Branches organise regular full- and half-day seminars, which feature speakers from both the technical and contemporary arenas. These valuable seminars also provide opportunities to introduce new products in the technical field and to brief members and politicians.

4. ANNUAL CONFERENCES

IMESA hosts an annual conference. Opportunities for members to gain valuable information and insight into issues facing the municipal engineering fraternity which include the presentation of topical papers, product exhibitions, and an opportunity to share and discuss



Monumenta Circumspice means
For our monuments, look around you.

ideas with like-minded engineers, municipal representatives, and non-technical associates.

5. BURSARY SCHEME

In the year 2000, IMESA established a bursary scheme for students studying at any ECSA accredited tertiary educational institution in South Africa. The aims of the scheme are :

- (i) To provide financial assistance to students who would otherwise not have been able to afford to study in the field of Civil Engineering or any other discipline of engineering.
- (ii) To recognise the achievements of students and prospective students who are dependants of IMESA members.

6. IMESA TRAINING

IMESA offers a range of training courses covering all aspects of Infrastructure Asset Management and other priorities relevant to engineering and municipal environments.

E. IMESA membership categories/grades

Corporate Members

Professional Members

They shall be persons who:

- (i) Are registered by ECSA or an equivalent engineering council recognised by ECSA as full professionals in at least one of the following categories:
 - Professional Engineer
 - Professional Engineering Technologist
 - Professional Engineering Technician
 - Professional Certificated Engineer
 - Registered Engineering Technician
- (ii) Have at least 3 years of infrastructure engineering experience after achieving a qualification recognised by ECSA or an equivalent engineering council recognised by ECSA for registration
- (iii) Have been admitted as such by the Executive Committee, or;
- (iv) Having failed to comply with the requirements of clause (i) and (ii) above, have been admitted by Council, on the unanimous recommendation of the Executive Committee based on their opinion that such persons have the experience, employment responsibility, or involvement in infrastructure engineering or made such a contribution to infrastructure engineering, which, in the interests of the Institute, justifies such admission.

Non-Corporate Members

Graduate Members

They shall be persons who:

- (i) Are registered/eligible for registration by ECSA or an equivalent engineering council recognised by ECSA in at least one of the following categories:
 - Candidate Engineer
 - Candidate Engineering Technologist
 - Candidate Engineering Technician
 - Candidate Certificated Engineer
- (ii) Are admitted as such by the Executive Committee; or
- (iii) Have been admitted by Council on the unanimous recommendation of the Executive Committee based on their opinion that such persons have the experience, employment responsibility, or involvement in infrastructure engineering or have made a contribution to public sector engineering, which in the interests of the Institute, justifies such admission

Student Members

They shall be persons who are:

- (i) Enrolled students at a local or international university/technical university recognised by ECSA;
- (ii) Studying towards a degree/diploma in engineering
- (iii) Admitted as such by the Executive Committee

Associate Members

They shall be persons who:

- (i) Have satisfied the Executive Committee that they are involved in an aspect of infrastructure engineering
- (ii) Are admitted as such by the Executive Committee

Affiliate Members

They shall be those with academic, research, consulting, commercial, industrial, or other undertakings who:

- (i) Are, in the opinion of the Executive Committee, involved in business related to infrastructure engineering
- (ii) Are admitted as such by the Executive Committee

F. Subscription fees:

July 2016 – June 2017

NB: THERE IS A SEPARATE INFORMATION DOCUMENT AND APPLICATION FOR AFFILIATE MEMBERSHIP (FOR COMPANIES).

Subscription fees: July 2016 – June 2017	
ENTRANCE FEE	
Member (all categories)	R240
ANNUAL CORPORATE MEMBER FEES	
Fellow	R960
Professional	R960
Retired Fellow	R280
Retired Professional	R280
ANNUAL NON-CORPORATE MEMBER FEES	
Graduate	R460
Student	R250
Associate	R580
Retired Non-corporate	R250

Application for Affiliate Membership

Please complete this form clearly and forward to info@imesa.org.za

All information required should be given as fully as practicable.

(Applications will be processed within 14 days from the date ALL relevant documentation is received.)

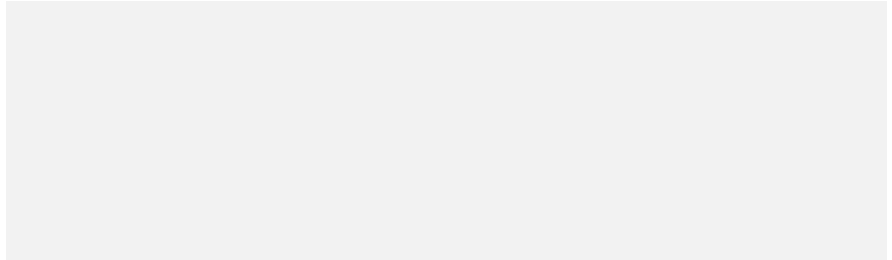
MEMBERSHIP TYPE APPLIED FOR: <i>(select a category)</i>	PLATINUM	GOLD	SILVER
To the EXECUTIVE COMMITTEE			
DECLARATION We desire to be admitted to THE INSTITUTE OF MUNICIPAL ENGINEERING OF SOUTHERN AFRICA (IMESA) as an Affiliate Member in the above Membership Category and do hereby accept that, in the event of admission, the company will subject itself to the Constitution, and the relevant By-laws, as well as to any future amendments or extensions thereto. We will pay the membership fees as required and promote the objects of the Institution as far as possible. Furthermore, it is certified that all the particulars given on this form are true and correct.			
NAME OF COMPANY:			
ADDRESS:			
		POSTAL CODE:	
MOTIVATION FOR MEMBERSHIP: <i>(include Company profile)</i>			
NAME:			
DESIGNATION:			
ON BEHALF OF THE COMPANY <i>(signature):</i>		DATE SIGNED:	

GENERAL PARTICULARS <i>(Please complete in block letters):</i>			
NAME OF COMPANY:			
VAT NUMBER:			
DATE ESTABLISHED:			
POSTAL ADDRESS FOR CORRESPONDENCE:			
		POSTAL CODE:	
CONTACT PERSON:			
E-MAIL ADDRESS:			
TELEPHONE:		FAX NUMBER:	
ABOUT THE COMPANY <i>(Please attach company profile)</i>			
HOW MANY OFFICES OR OUTLET POINTS DO YOU HAVE IN SOUTHERN AFRICA? <i>Please attach a separate schedule listing the physical addresses of all these offices and outlet points.</i>			
MAIN CORE OF BUSINESS:			
RELATION TO MUNICIPAL ENGINEERING:			
TRADE REFERENCES: <i>A minimum of three contactable references of recent clients are required.</i>			
COMPANY NAME		CONTACT PERSON	TELEPHONE NUMBER
1			
2			
3			
MEMBERSHIP OF OTHER INSTITUTIONS OR SOCIETIES: <i>Please write full names (do not use abbreviations.). Certified copies of membership(s) to be attached to this application.</i>			
INSTITUTION / SOCIETY		DATE JOINED:	PROFESSIONAL REGISTRATION NO:
1			
2			
3			
4			
5			

IMIESA Journal - Please advise the addresses to which you would like the IMIESA Journal to be sent:
(Please attach a separate schedule if insufficient space.)

Platinum Members Up to 15 free copies		Gold Members Up to 10 free copies	Silver Members Up to 5 free copies.
CONTACT PERSON		ADDRESS FOR DELIVERY	
1			
2			
3			
4			
5			

COMPANY STAMP:



FOR OFFICIAL USE ONLY:

This application is :		<input type="checkbox"/> Supported	<input type="checkbox"/> Not supported
NAME:			
DESIGNATION:			
ON BEHALF OF IMESA: (signature)		DATE SIGNED:	
COMMENTS:			
APPROVAL			
NAME:			
DESIGNATION:			
SIGNATURE:		DATE SIGNED:	

Application for Individual Membership

Please NOTE that all applications must be accompanied by a CV, certified copies of ID and qualifications.

Completed applications to be forwarded to **info@imesa.org.za**

(Applications will be processed within 14 days from the date ALL relevant documentation is received.)

MEMBERSHIP TYPE APPLIED FOR: (mark relevant category)		PROFESSIONAL		GRADUATE		STUDENT		ASSOCIATE	
DETAILS OF MEMBER									
TITLE, INITIAL, NAME(S) & SURNAME:									
POPULATION GROUP:		Black	Coloured	Indian	White	Other:.....			
ID NUMBER:									
BIRTH DATE:					GENDER:				
CITIZENSHIP:					DISABILITY:				
CONTACT DETAILS:		HOME TEL:				PRIMARY EMAIL:			
		WORK TEL:				ALTERNATE EMAIL:			
		FAX:				MOBILE:			
PHYSICAL ADDRESS:									
						POSTAL CODE:			
POSTAL ADDRESS: <i>For correspondence and distribution of IMIESA magazine</i>									
						POSTAL CODE:			
PAYMENT OF INVOICE									
COMPANY NAME: (if applicable)									
VAT REG. NO.: (if applicable)									
POSTAL ADDRESS: (Include Town and Postal Code)									
						POSTAL CODE:			
REFERRED TO IMESA BY:		NAME:				TEL:			
		MEMBERSHIP NO.				CELL:			
		EMAIL:							

ENGINEERING & TECHNICAL EDUCATION AND QUALIFICATIONS: <i>(e.g. Government Certificate of Competency and/or further studies)</i>					
HIGHEST QUALIFICATION:					
INSTITUTION:		DATE OBTAINED:			
PRESENT COURSE OF STUDY:					
EXPECTED QUALIFICATION:					
INSTITUTION:		DATE COMMENCED:			
PROFESSIONAL AND/OR IN-TRAINING REGISTRATION - <i>certified copies of all certificates and registrations must be attached:</i> <i>(e.g. Engineering Council Of South Africa (ECSA) or an equivalent engineering council recognized by ECSA)</i>					
PROFESSIONAL BODY		CATEGORY OF PROFESSIONAL REGISTRATION:		PROFESSIONAL REGISTRATION NO:	DATE OF PROFESSIONAL REGISTRATION:
1					
2					
3					
4					
TECHNICAL EXPERIENCE:					
PRESENT POSITION:					
ORGANISATION:		DATE APPOINTED:			
MAJOR RESPONSIBILITIES:					
PREVIOUS POSITION:					
ORGANISATION:		DATE APPOINTED:			
MAJOR RESPONSIBILITIES:					
Indicate preferred categories of technical interests. Indicate as 1, 2 or 0 (1 = high interest, 2 = casual interest, 0 = no interest):					
Infrastructure Asset Management (A)	Building Structures & Town Planning (B)	Computer Applications & Knowledge Management (C)	Projects & Business Management (P)	Roads, Transportation & Storm-water (R)	Water, Sanitation & Environment (W)

I do hereby accept that, in the event of my election, I will subject myself to the Constitution, and the relevant By-laws, as well as to any future amendments or extensions thereto; I will pay the membership fees as required; I will promote the objects of the Institution as far as may be in my power and I certify that all the particulars given on this form are true and correct.

Signed on this day of 20.....

Signature: